

WIFI-USB Hair Tester

User Manual

1. Part Names & Functions



1.1 Functions and instructions of the parts

Micro-USB port: when the device power is low, connect a 5v DC charger to charge the device, then the red indicator is on; When the red indicator goes off, the power become full.

It is not recommended to use the equipment during the charging process (it will reduce the service life of the equipment battery).

Power switch/LED lights adjustment: when power is off, long-press the On-off button for 5 seconds to switch on the device, then the front LEDs light up. When the WIFI is connected successfully, the green indicator stops flashing. When the devices is working, short-press the button to adjust the brightness of the front LED lighting; long-press the

button to switch off the device.

Status indicator: when starting to work, the front LEDs open light up; after 10 seconds, the WIFI function starts, and the green indicator flashes. When the WIFI is connected successfully, The green indicator is stably on. When charging the device, the red light is on. When the battery is fully charged, the red light goes off. When the battery is low, the device will automatically shut off, and all lights go out.

Mode: shift modes between WIFI mode and PC mode.

Photo/video: click this button to take a photo and save automatically when the device is connected. Press this button for 5 seconds to enter the video mode. After releasing the key, it stays in the recording mode. Then press this button again for 5 seconds to exit the video mode and automatically save the recording of video in this period. Photos and video are stored on IOS/Android devices and can be viewed with the relevant APP.

1.2 specification:

Sensor: high-performance sensor

Main chip: 24Bit DSP

Magnification: 200X 500X 800X 1000X 1600X (according to models)

Photo/video: supported

Light source: white LEDs

Static resolution: 1920x1080, 1280x720, 640x480

Image resolution: 1920x1080, 1280x720, 640x480

Optical Focus: manual

Support systems: Android 4.0 and above, IOS 8.0 and above

Battery: 1400mah

Charge time: 5 hours

Working time: 2.5 hours

Power supply: Micro-USB (5V DC)

Product color: Silver Gray

Main dimensions: 160mm (length) 33mm (outer diameter)

Package weight: 180g

1.3 Safety warnings and cautions:

1. Do not disassemble the product, so as to avoid the electrostatic breakdown precision chip.
2. Do not use organic solvent to clean the product such as alcohol.
3. Don't touch the lens with your fingers to avoid scratches and smudges on the surface.
4. Avoid high temperature and high humidity and prevent short circuit of electronic devices. The product does not have waterproof function, please avoid rain and water.
5. The use of this product and storage temperature moderate range: 0°~ 40°C, relative humidity: 45% RH to 85% RH
6. If foreign matter or water/liquid are entered into products, please remove the USB cable. And send it to the maintenance center for maintenance. Do not handle it yourself.

1.4 Packing content:

WIFI-USB Hair Tester 1
Micro-USB Power cable 1
User Manual 1
CD 1



2. How to use?

Use the WIFI Microscope on an iOS/Android Device

2.1 Download APP



Scan the following QR code,
download and install the APP WIFI Image.

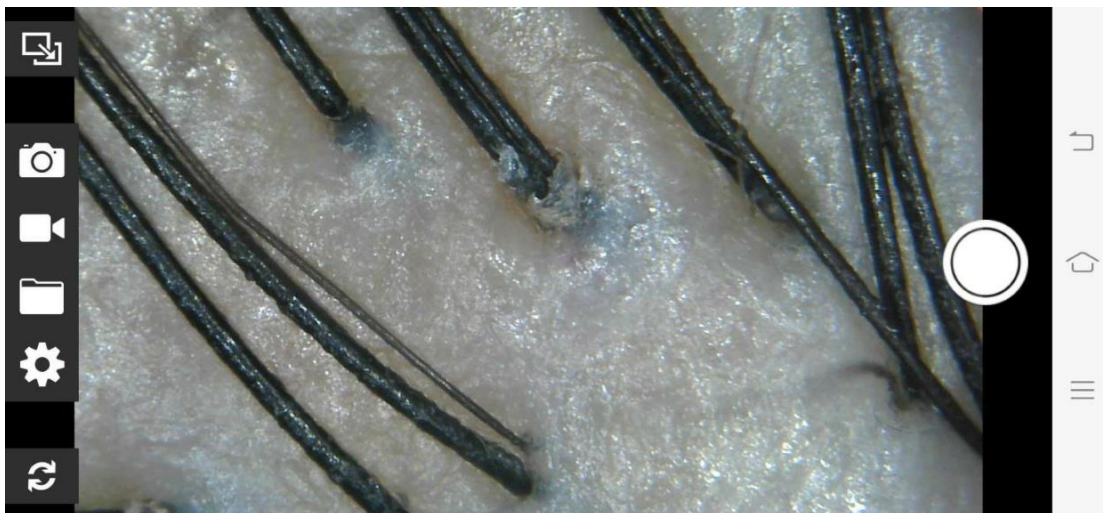
2.2 open equipment

Long-press the On-off button for 5 seconds to switch on the device, the front LEDs will light up. After 10 seconds, the WIFI function starts.

2.3 Use of APP

connect WIFI digital microscope to your IOS/Android device

Open the WIFI Settings on the IOS/Android devices, find a WIFI hotspot named "WIFI Image" , click the link, and then return to the main interface of IOS/Android device after successfully connecting. Find the installed "WIFI Image" APP and click to run it.




2.3.1 note:

When using this product to connect to WIFI, it can not be connected to the Internet. If the product is connected to WIFI and the APP does not display properly when opened, you need to turn off the data networking function.

Some phone or tablet systems require authorization to properly read and write the phone's memory. You will not be able to take and save pictures or videos without permission. If there is a prompt like the one shown in the following picture, you must select "Allow". If it does not jump out, or miss it or press the wrong one, you can only find the corresponding

setting in the relevant phone Settings and change its permission to "allow".

3 Use on PC

Connect the product directly to the computer via USB cable and copy the link <http://www.unimakes.com/down/20200616WIFIUSB2MHAIRTESTER.zip> to the browser address bar to visit, and download install the software to the computer, then a icon  on the desktop can be seen, click and run it to use.



FAQ

***The driver or measurement soft is failed or it doesn't working after installation is completed.**

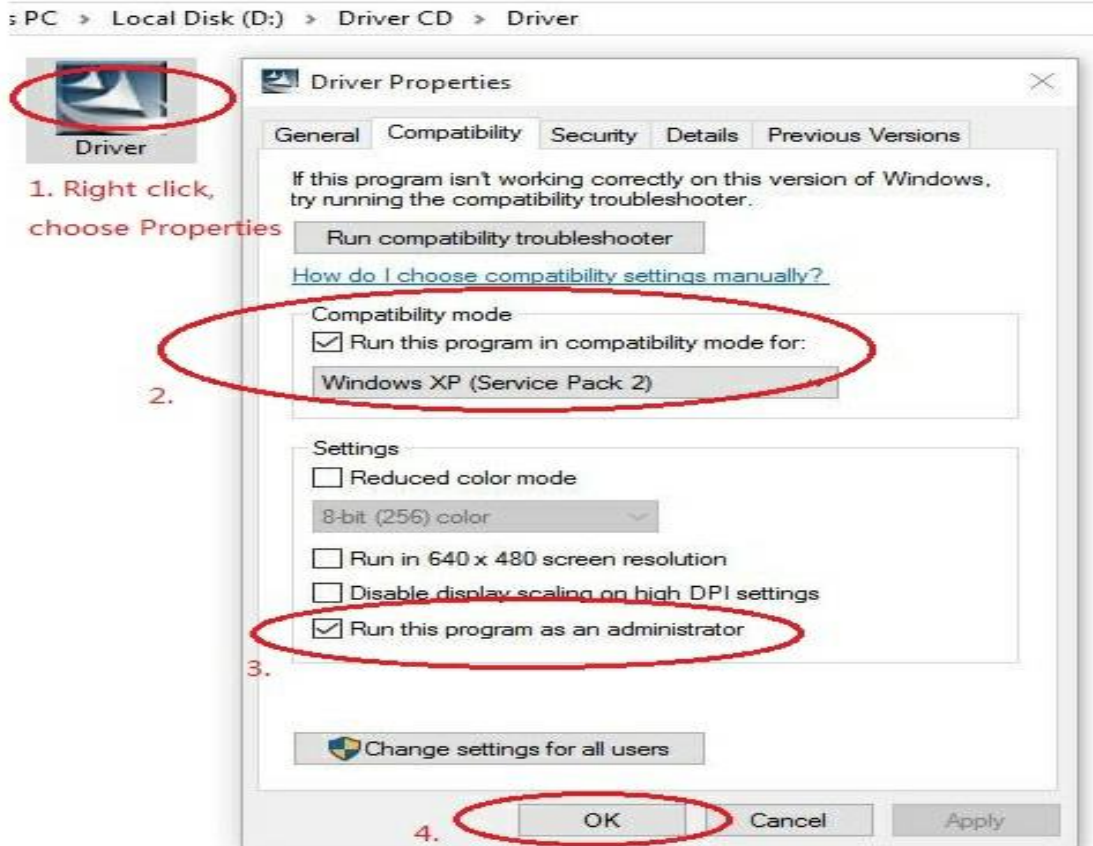
First, please make sure your system is fully functional or at least better than Windows 2000 version, and make sure the EXE program will be running without problem..

Second, your system may lack of the net framework system components, the CD comes with system components, please install.

Third, if your system is 64-digit, Win8, Win10, due to the security of the system has been improved, so the software is required to be authorized and to set up a compatible mode, and thus can lead to normal installation and normal running of system in your computer . Setting as shown below:

Compatibility and Authority

If the Driver or Measurement can't be installed or run, please set the compatibility and authority.



Fourth, if anti-virus software Popup of the "select" tips, all must be chosen to "allow", if not choosing or too late, anti-virus software will default stop or block it, there will be abnormal results happened later on.

After the installation, you must restart the computer. Other restart methods may cause abnormal function.

Once it's blocked by the anti-virus software in the computer, the only way is to find it and release it from the blacklist list of anti-virus software in your computer, and mark the software "trust". Or completely delete anti-virus software, this software can then return to normal.

***The roller in the microscope can not be rotated.**

The roller has turned to an end, and it can not be forced to the wrong direction. so please turn the roller to the ZOOM key and use the point to turn around.

***Although I have done it according to the instructions of all the corresponding operation, USB microscope is still doesn't working in computer.**

Please change to another computer, try again, because now there are too many computer system versions, some of which have been changed, some of the version of the system function is not reliable, there will be some unpredictable problems. So we also suggest that we use the genuine Windows system. It may also be blocked or be listed as blacklist by anti-virus software in your computer system. unless it is released from the anti-virus software, otherwise you must completely delete anti-virus softwares in your computer. We know, there are too many anti-virus softwares, but so few reliable and good anti-virus softwares.

***The driver is installed successfully, but there is no response to the microscope. the display of screen of driver software is strange.**

Driver software AMCAP menu "device" should be selected as the microscope GL CAM. The reason is that there are other camera device in the computer before, other camera device was setted as the default device by this driver software, so it is necessary to set up here.

***The image is delay too much.**

This computer may not work well with the driver software, please try the software amcap v3.0.9.exe in the CD. If it still remains, the USB data cable may not good enough, please

use original cable from factory or good quality one.